

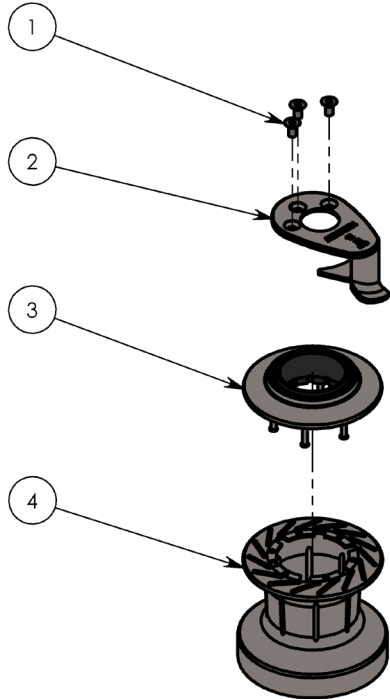
# PRODUCT MANUAL

**12ST** (V.4.0)

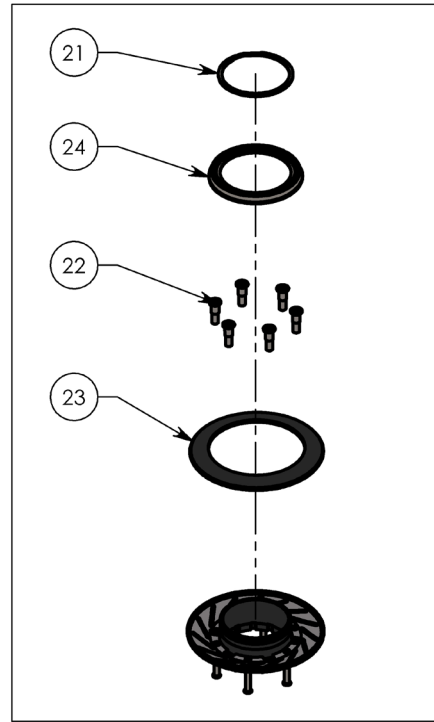
**12ST FS** (V.2.0.F)



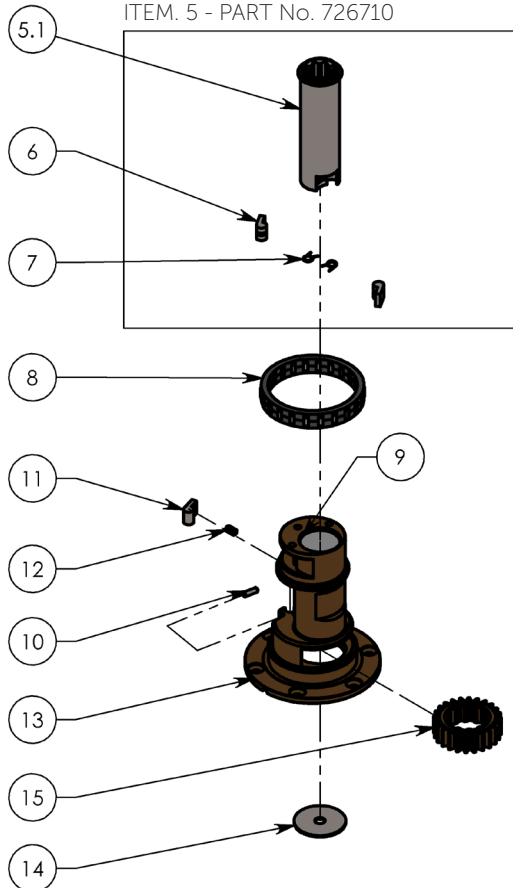
## EXPLODED VIEW



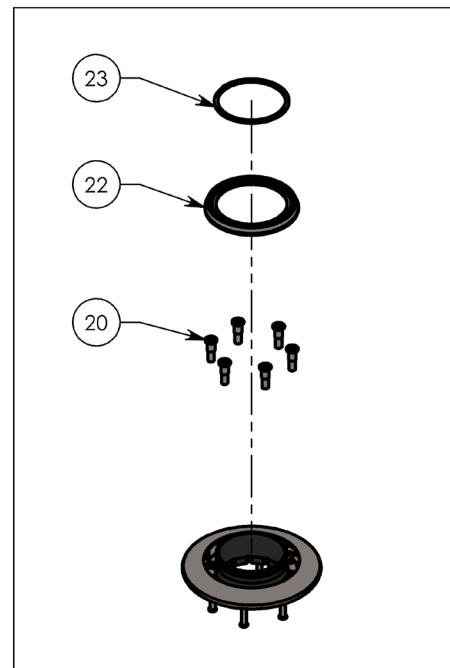
ITEM. 3  
MODEL ST - PART No. 537551



ITEM. 5 - PART No. 726710



ITEM. 3  
MODEL ST FS - PART No. 537511



## I PARTS LIST

ITEM NO.	QTY.	DESCRIPTION	PART NO.
1	3	Screw	543311
2	1	Self-tailing arm	596715
3	1	Self-tailing top complete Model ST	537551
3	1	Self-tailing top complete Model ST FS	537511
3.1	1	Circlip	726400U
3.2	1	Top ring	782100
3.3	6	Screw	781811
3.4	1	Disc - Model ST (537551 only)	726310
4	1	Drum complete	773600
5	1	Drive shaft complete	726710
5.1	1	Drive shaft	726705
6	2	Pawl	713200
7	2	Arm spring	713300
8	1	Roller bearing	727400
9	2	Bushing (not removable)	716501
10	1	Screw	DIN913-A4-M4x12
11	1	Pawl	533400
12	1	Spring	533500
13	1	Base	731710
14	1	Insert plate	727500
15	1	Ratchet gear	711701
	<b>1</b>	<b>Service kit 18 (not included)</b>	<b>710018</b>

## I MOUNTING INSTRUCTIONS

Installing the winch is easy, if you follow these instructions. The numbers in ( ) refer to the position numbers in the parts list.

### Tools required for the installation:

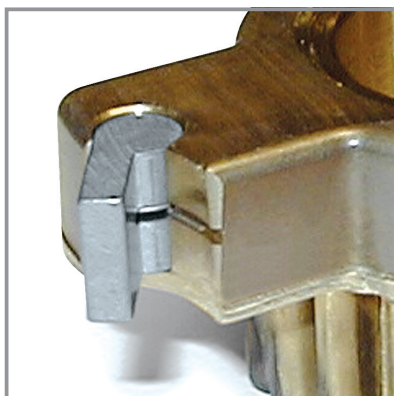
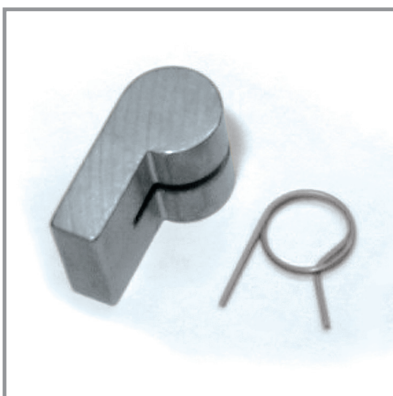
- Screwdriver (large)
- Ø6,5 mm. (1/4") drill
- 6 pcs. M6 (1/4") countersunk head screws
- Ring spanner to match nuts

1. Remove screws (1).
2. Remove self-tailing arm (2) and drum (4).
3. Mark location of bolt holes using the template.

**IMPORTANT:** On this model the self-tailing arm (2) is fixed in one position. Ensure correct positioning of the self-tailing arm, before marking and drilling the bolt holes.

4. Remove base (13). Be sure that no dust comes into contact with the winch while drilling.
5. Drill bolt holes Ø6,5mm (1/4").
6. Apply a light coat of bedding compound, ensuring that each bolt hole is bedded. Keep drain grooves clear.
7. Fasten base (13) into place using 6 pcs. M6 (1/4") countersunk head screws. Use large washers or a backing plate.
8. Assemble in reverse order.
9. Check that the winch is functioning correctly:
  - The drum should operate smoothly, by turning the drum clockwise by hand.
  - The drum must not turn when trying to turn the drum anti clockwise.
  - While turning the winch handle clockwise the drum should turn.
  - While turning the winch handle anti clockwise the drum should not turn.

## PAWL SPRING MOUNTING



Note the curved  
spring "arm"

## SERVICE INSTRUCTIONS

### Tools required for service:

- Screwdriver (large)
- Screwdriver (small)
- Winch handle
- ANDERSEN winch grease

1. Remove screws (1).
2. Remove self-tailing arm (2) and drum (4).
3. Insert a winch handle. Pull up the drive shaft (5) gently, while turning ratchet gear (15) carefully. Remove drive shaft (5).
4. Remove pawls (6) and arm springs (7).
5. Remove ratchet gear (15). DO NOT remove the insert plate (14) but make sure that the insert plate is positioned in its groove.
6. To release the roller bearing (8), gently insert a small screwdriver between roller bearing and base (13).
7. Remove roller bearing. Remove spring (12). DO NOT remove the pawl (11) and the spring (12) on the base.
8. Clean all parts in white spirits/mineral spirits. Remember to clean the gear teeth and roller bearing track.
9. Assemble in reverse order. During assemble, lightly grease all gear teeth, drive shaft, roller bearing, shafts, balls, pawls, springs and bushings. Use a small, soft brush. Pawls may be lubricated with either a very thin film of ANDERSEN WINCH GREASE. It is very important that pawls can move freely.

**IMPORTANT:** When assembling the winch, check the functioning of each pawl by pushing the pawl against the spring. The pawls should move smoothly and automatically return to their normal position, where the pawls engage with the teeth. If the pawls do not function correctly, clean and lubricate the pawls and gears. Check the function of the pawls again to make sure that it works correctly. If the pawls do not work correctly replace the springs and recheck the functioning.

Malfunctioning pawls may lead to unexpected release of the winch force resulting in fatal injuries to the user and others.

Service Kit No: 18 (art. no. 710018) contains spare parts for this winch.

### Maintenance instructions for PVD coated stainless steel surfaces.

PVD-coated surfaces should be rinsed regularly in fresh water to remove any salt residue, dirt or other contaminants and dried gently with a soft cloth. To remove grease or other marks, a mild abrasive free cleaning agent such as spray-on glass cleaning solution may be used. No caustic detergents or other aggressive or abrasive cleaning agents should ever be used, as they may damage the surface.

## GENERAL INFORMATION

Due to the best choice of materials and high precision in manufacturing, we recommend, for normal use, only to dismantle, clean and lubricate the winch once every second year. Under extensive use, such as racing, charter or blue water sailing, we recommend to lubricate the winch once every year.

We strongly recommend always to use ANDERSEN WINCH GREASE, when lubricating your winch. ANDERSEN WINCH GREASE is a high quality silicone/Teflon grease product.

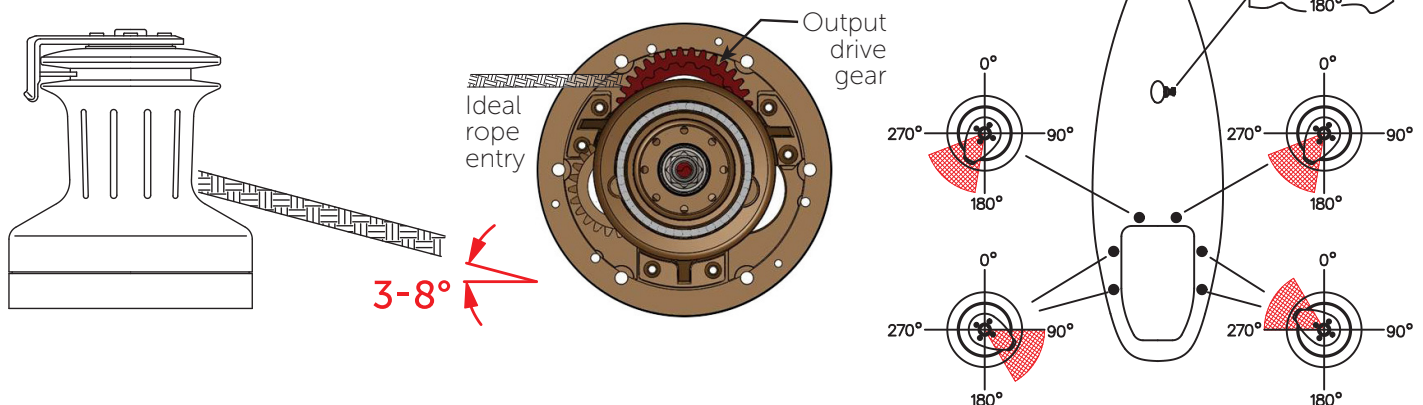
Most other types of grease, including "marine grease" are not suitable for lubrication of winches. Non-suitable grease products can cause malfunction, which could result in fatal injuries for the user and others.

Pawl arm springs should be replaced every second year. Spare arm springs and other parts that may be required are included in the ANDERSEN Service Kit. Please refer to the service instruction for the Service Kit suitable for the specific winch.

When the winch handle is not in use but the winch is under load, we recommend, from a safety point of view, to remove the winch handle from the winch.

To ensure correct function of the self-tailing unit, only use recommended line sizes. When using the winch with mooring lines DO NOT use the self-tailing function and be sure that the mooring line is not in contact with the self-tailing arm.

To ensure the best possible functioning of the winch, we recommend that the winch is placed in accordance with the line entry (shown below).



Be also aware that the self-tailing arm is positioned correctly. We recommend to have the self-tailing arm positioned within the shaded area (shown above). On this model the self-tailing arm is fixed, making it very important to establish the proper location of the holes prior to drilling these in the deck.

To identify the Output Drive Gear, insert a winch handle into the winch and rotate in both directions, the drive gear will only rotate clockwise in a fast and slow speed.

## I SAFETY NOTICES

### I ALL WINCHES



#### **Read All Safety Notices and Product Manuals**

Do not install or operate this winch before reading and fully understanding the contents of this Product Manual.



#### **Stay Alert When Operating**

Andersen winches are very powerful and have the potential to cause significant damage and/or serious injury if used improperly or without due caution and vigilance.



#### **Operators Must be Trained**

Help prevent significant damage and/or serious injury by ensuring any person operating a winch has a thorough understanding of its proper operation and is aware of the potential hazards involved. As a minimum, all winch operators must read and understand this Safety Notice Sheet and the Product Manual.

Particular attention is drawn to the following points:

- Children and others not qualified to operate an electric winch must be kept at a safe distance from the winch and any rigging or fittings that are under load.
- Long hair and/or loose clothing must be tied back to avoid being caught in the winch.
- In the event of a rope override or other fault, stop the winch and turn off power before attempting to resolve the problem.



#### **Avoid Accidental Operation**

Remove winch handles and turn off power to the winch when not in use to help avoid unsupervised or unintentional operation. Failure to do so could result in significant damage and/or serious injury.



#### **Maintenance**

Turn off power to the winch before performing any maintenance or service tasks. Failure to do so could result in significant damage and/or serious injury.



#### **Lifting Operations**

The winch must not be operated with the rope in the self tailer when used in any kind of lifting operation.

Any lifting operations should be conducted by two persons in order to maintain constant visual contact with the object being lifted.

Furthermore the self tailer must not be used as a cleat for a rope used to lift or suspend any object. The rope must be secured properly by tying off, or leading to a suitable fitting such as a cleat or bollard.

**Failure to observe these precautions could result in serious injury or death.**

**I DO NOT DISCARD**



# PRODUCT MANUAL

12ST (V.4.0) | 12ST FS (V.2.0.F)

---

p8

## | WORLDWIDE DISTRIBUTION & SERVICE

| Visit [www.andersenwinches.com](http://www.andersenwinches.com)

## | WARRANTY

| Visit [www.ronstan.com/warranty](http://www.ronstan.com/warranty)

Manufactured by Ronstan Denmark ApS.  
Jægvænget 36 - 7100 Vejle - Denmark  
office@ronstan.dk - [www.andersenwinches.com](http://www.andersenwinches.com)

