

Bilge Boat Monitor System 12V / 24V

Part Nr. 01-07-007

This is a quick, 5-step guide on how to install the device and water level sensor in your boat, how to start up the application in your smartphone, tablet or computer and finally a simple test procedure to check the system.

Everything you need is in this package, excluding cables for connection to the battery and a fuse (read "Connection to battery" section for details). The device is equipped with a SIM card powered by C Security Systems, our service and support provider*. *Remember to keep your login and password in a safe place for later use.*

Let's start!

1. Connect the device and sensor to the sockets:

a. Device:

- Connect the red (+) wire to the connector marked with red.
- Connect the black (-) wire to the connector marked with black.
- Connect the blue wire to the connector marked with white.

b. Sensor:

- Connect the red (+) wire to the connector marked with red.
- Connect the black (-) wire to the connector marked with black.
- Connect the brown wire to the connector marked with white.

2. Install the water level sensor and device:

- a. Mount the water level sensor in a vertical position with mounting holes towards the bottom of your vessel at a position where the sensor is submerged by bilge water when it should send the alarm message. Avoid drilling in the hull, use a mounting block with the right thickness to position the level sensor.
- b. Glue one adhesive dual lock fastening tape to the back of the device and glue the connector sockets to the other piece of fastening tape. Mount the device and sockets in a dry, hidden place. Any positioning will work, however avoid hiding the device behind or under sheets of metal or carbon fiber. The less material between the device and the sky will enhance system performance as it communicates with satellites and GSM networks.
- c. If needed any of the wires can be extended with normal marine grade wires to allow longer distance between sensor and the device.

Connection to battery- important! A bilge pump system is normally connected directly to the battery with a separate fuse, which will also define the appropriate amperage to use for the Bilge Boat Monitor. If the Bilge Pump Monitor is connected standalone, attach an inline fuse of 5 A to the positive (+) cable before connecting to the battery. The Bilge Boat Monitor is designed for 12V DC and 24V DC operation only.

3. Connect the Bilge Boat Monitor to the battery:

- a. Now connect a separate red power cable (+) to the connector marked with red, and connect a separate black negative cable (-) to the connector marked with black.
- b. Final step is to connect the red (+) cable with a fuse to the power source 12/24V DC positive (+), and the black negative (-) cable to the negative (-).
- c. Check that the device flashes with a green light in the CEL/GPS/PWR window.

4. Login and start up:

a. App setup:

- To view the device status, download the application called "GPSGate Fleet" on iOS App Store or "Fleet" on Android Play Store.



- Start the application and enter www.myalbinpump.com when asked for server address. Now the application will download the latest update and then you can login with your username and password which is included in the package with the device.

b. Add alarm recipients:

- Start a webbrowser and navigate to www.myalbinpump.com
- Login with your username and password provided inside the package containing the device
- On the top right corner press **+ User** button
- User type should say "Contact" and then press "next".
- Fill in the contact information and finally press "Save"
- The new contact will receive notifications from high water/ GeoFence alarms, you can have multiple contacts.

(continued on next page)

5 To test your system:

- When you are logged in, check that your vessel is shown in the correct position on the map. Press the "Status" tab and check the status information in the status field.
- Place two fingers on the level sensor where indicated and wait for 5 seconds until the "HighWater" alarm is activated and "HighWater" is displayed in the status field.
- Check that you have received an alarm message to your email and a text message to your mobile device.
- Lock the Geofence using the tab "Commands", then "Lock" and press "SEND" and wait for the confirmation. If your vessel moves outside the locked position you will receive alarm messages to the registered email and phone number.

Support

Support is available at www.c-pod.com, click *Support* on the navigation bar.

Email: support@c-pod.com

Tel. +46 8 5000 10 53

Part Nr. 01-07-007

Specifications Device

Dimensions	70 mm(L) x 46 mm(W) x 17.5 mm(H)
Weight	62 g
Backup Battery	Li-Polymer, 650 mAh
Water Resistance	IPX6 compliant
Operating Voltage	9V to 32V DC
Operating Temp.	-20°C ~ +80°C (-40°C ~ +80°C for storage)

Specifications Level Sensor

Voltage rating	10.5 to 28.8 V DC
Fuse	Fused appropriately based on bilge pump system
Amperage	20 mA in standby mode
Activation/deactivation	Two fingers on the marked areas activate, one finger turns off.
Activation cycle	Built in 30 sec delay after activation to operate safely
Operating Temperature	-20°C ~ +80°C (-40°C ~ +80°C for storage)

Waste handling & material recycling

At the product's end of life, please dispose of the product according to applicable law. Where applicable, please disassemble the product and recycle the parts according to material.

Tinned and sealed wires and with a built-in reverse wire protection. Resistant to gasoline and chemicals.

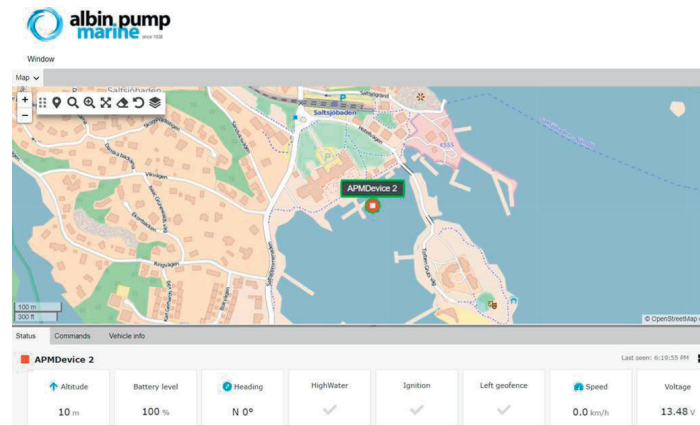


fig. 1 Example screen shot of information presented in the Status field

- * The use of the SIM card included with the Bilge Boat Monitor System will incur a yearly subscription fee of 70€ for the GMS traffic and the tracking and monitoring services provided. You may use your own SIM if you desire, however a one-time administration fee of 100€ is charged for the services provided to set up the system. Annual subscription, setup administration and support are provided by C Security Systems AB.

Disclaimer: Under no circumstances, including negligence, shall Albin Pump Marine AB, C Security Systems AB or its affiliates be liable for any direct, indirect, incidental, special, punitive or consequential damages that may result from the use or inability to use the monitoring system, including without limitation use of or reliance on information available on the smartphone application and website, interruptions, errors, defects, mistakes, omissions, delays in operation or transmission, non-delivery of information, disclosure of communications, or any other failure of performance.



Albin Pump Marine AB
Mogölsvägen 16
55593 Jönköping, Sweden

info@albinpumpmarine.com
www.albinpumpmarine.com



FC **WARRANTY**
One year limited warranty